

The background of the image is a dark grey, almost black, hexagonal grid pattern. The hexagons are arranged in a staggered, honeycomb-like fashion, creating a textured, three-dimensional effect with subtle shadows and highlights.

||| MetaStock  
***NINETEEN***

# Disclaimer

---

**This demonstration is designed to instruct you on using MetaStock and accompanying software plugins and is not a recommendation to buy or sell, but rather guidelines to interpreting and using the specific indicators and features within the software. The information, software, and techniques presented today should only be used by investors who are aware of the risk inherent in trading.**

**MetaStock and its employees shall have no liability for any investment decisions based on the use of their software, any trading strategies or any information provided in connection with the company.**

**MetaStock and its employees do not endorse the purchase of any security nor is it paid for the promotion of any security. No information contained in this presentation should be construed as investment advice or a solicitation to buy any security.**

CFTC RULE 4.41 – HYPOTHETICAL OR SIMULATED PERFORMANCE RESULTS HAVE CERTAIN LIMITATIONS. UNLIKE AN ACTUAL PERFORMANCE RECORD, SIMULATED RESULTS DO NOT REPRESENT ACTUAL TRADING. ALSO, SINCE THE TRADES HAVE NOT BEEN EXECUTED, THE RESULTS MAY HAVE UNDER-OR-OVER COMPENSATED FOR THE IMPACT, IF ANY, OF CERTAIN MARKET FACTORS, SUCH AS LACK OF LIQUIDITY. SIMULATED TRADING PROGRAMS IN GENERAL ARE ALSO SUBJECT TO THE FACT THAT THEY ARE DESIGNED WITH THE BENEFIT OF HINDSIGHT. NO REPRESENTATION IS BEING MADE THAT ANY ACCOUNT WILL OR IS LIKELY TO ACHIEVE PROFIT OR LOSSES SIMILAR TO THOSE SHOWN.

## Characteristics & Risks of Standardized Options

Prior to buying or selling an option, investors must read a copy of the Characteristics & Risks of Standardized Options, also known as the options disclosure document (ODD). It explains the characteristics and risks of exchange traded options. Copies of this document may be obtained from your broker or from any exchange on which options are traded.

# MetaStock 19

---

New and Improved Charting Workflows

New and Improved Layout Workflows

New Theme Support

New Container for Modern Look/Feel

New Charting Styles

New Drawing Tools

New Trading Systems



# Theme Support



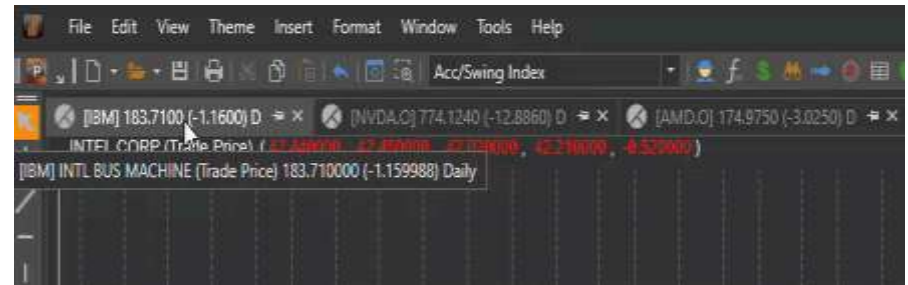
# Charting Workflows

## Tabbed Charts

- Works like a browser
- Pin Charts
- Drop to access all charts
- Drag and drop ability
- Float charts outside container
- Horizontal and Vertical Groups

6 Classic Tile modes for Quick Views

Icons to identify type of chart being viewed



# Layout Workflows

---

Layouts can function as independent windows

Improved Multi-Monitor Support

Simple process for creating and saving Layouts

Create and save multi-chart views

Create and save multi-time frame views

Easy navigation of Main Window and Layout Windows

Quick Selection for moving between Layouts



# Restore Workspace

Saves your current state and relaunches



# Easier Indicator Searching

---

Indicator Quicklist now contains incremental search and search

Results will show both starts with and contains

Full list of indicators is now alphabetical



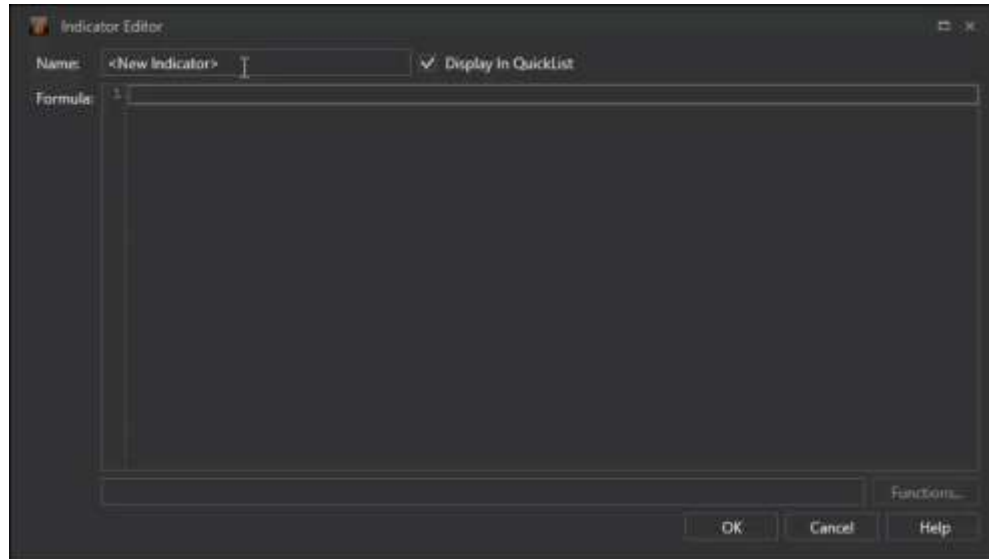


# New Indicator Editor

Display count of lines for improved readability

Error display will show which line contains an error for easier identification of errors

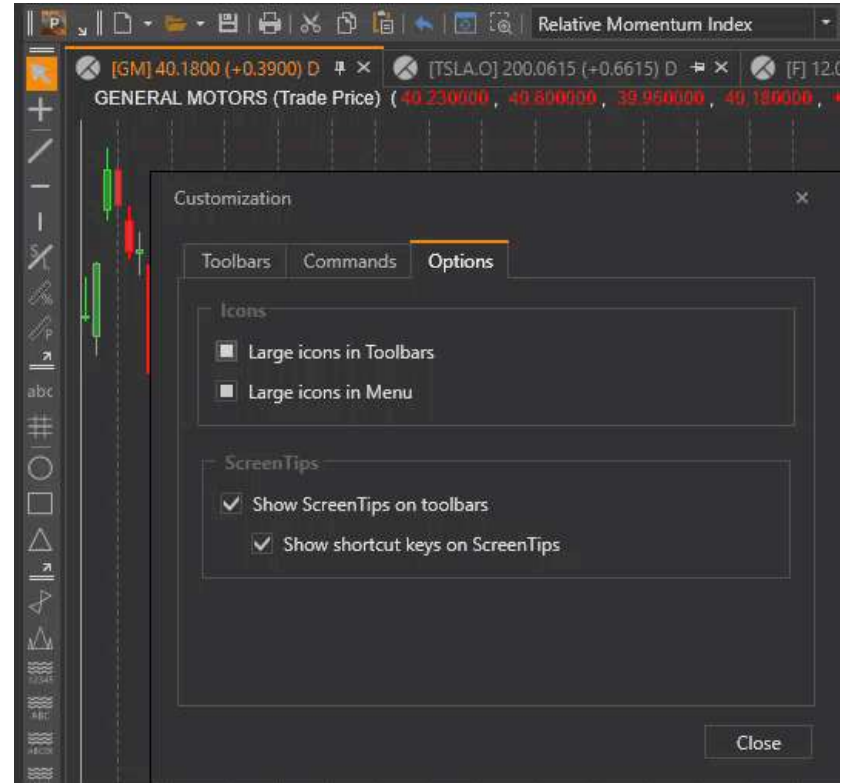
New Syntax Highlighting.in formula language code



# Toolbar Changes

---

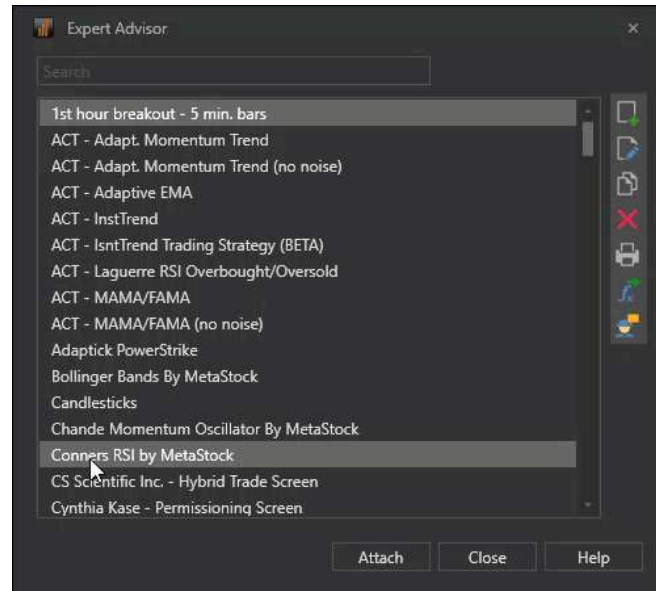
- Ability to use large/regular size icons in toolbars
- Ability to turn Toolbars Tooltips on or off.
- All new icons to help identify tools more easily.
- Toolbars changes will persist across all layouts.



# Expert Advisor Search

Added Search Box for filtering Explorations

Intuitive icons added to Expert Attach Dialogue for functions



# Expert Commentary Enhancements

Window can be docked or floated.

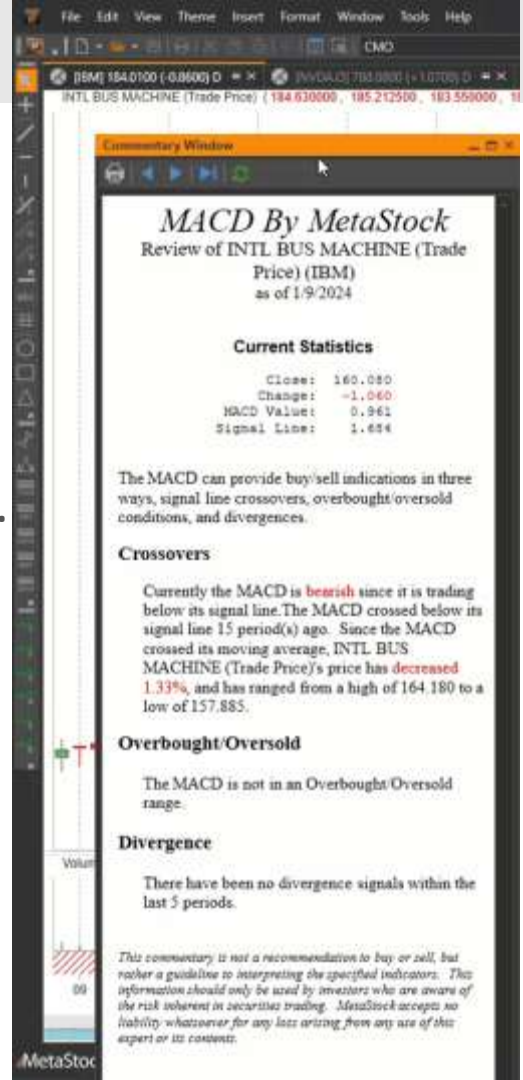
Docking is more responsive and resizable in dock mode.

Easy-to-use guidance for location docking with drag-and-drop navigation.

Window can be put into Auto-Hide Mode (Fly Out)

Can be open and available per layout.

Can be used per layout



# Data Window Enhancements

Docking is more responsive and reliable in dock mode.

Window can be docked or floated

Window can be put into Auto-Hide Mode (Fly Out)

Can be open and available per layout

Background color will match the chart theme

Can be used per layout



# QuoteCenter and OptionScope

## QuoteCenter

Improved theming using the Container theme

New Container for QuoteCenter

New Accordion or Flyout control to access settings

Improved Gainers/Losers Bar

## OptionScope

Improved theming using the Container theme

New Container for OptionScope

New Accordion or Flyout control to access settings



		Gainers				Losers			
		35   94.40%		46   45.54%					
	Symbol	Symbol Name	Tick	Last	High	Low	Open	Volume	Cp
	AAPL	APPLE INC	▼	186.79	183.73	186.88	182.11	11314821	
	ABBV	ABBVIE	▲	171.54	170.89	170.89	170.25	9814652	
	ABT	ABBOTT LABS	▲	118.67	118.74	116.27	118.49	835554	
	ACN	ACCENTURE PLC	▲	378.01	379.49	375.21	378.24	415860	
	ADBE	ADOBE INC	▲	552.97	557.20	549.79	552.00	896324	
	AIG	AMER INTL GR	▼	72.89	72.53	71.73	71.92	1120587	
	AMD	ADV MICRO DE	▲	178.28	176.41	175.96	174.25	10807881	
	AMGN	AMGEN	▼	279.21	278.88	277.47	278.89	348889	
	AMT	AMER TOWER	▲	196.88	191.33	186.50	186.50	1451894	
	AMZN	AMAZON COM	▲	173.84	173.95	172.27	172.44	12417907	
	AVGO	BROADCOM INC	▼	1298.00	1296.51	1282.81	1292.00	47150	
	AXP	AMER EXPRESS	▲	218.79	219.20	216.79	217.18	845394	
	BA	BOEING CO	▲	207.86	207.88	200.18	201.14	5768489	
	BAC	BANK OF AME	▲	34.33	34.60	34.11	34.22	14833256	
	BK	BANK NY MELL	▼	55.77	56.11	55.38	55.54	936234	
	BKNG	BOOKING HOL	▲	3491.18	3507.38	3480.00	3478.13	142716	
	BLK	BLACKROCK INC	▲	812.18	812.18	797.32	798.78	152037	
	BMY	BRISTOL MYER	▲	30.82	30.82	30.37	30.53	2699941	
	BRKb	BERKSHRE CL B	▼	413.01	414.67	407.71	408.50	1381269	
	C	CITIGROUP	▲	33.87	33.99	33.33	33.50	784144	
	CAT	CATERPILLAR L	▼	329.65	331.88	326.99	327.39	806864	
	CHTR	CHARTER COM	▼	288.81	288.88	287.23	287.32	109138	
	CL	COLGATE PAL	▼	88.28	88.34	88.00	88.47	1710000	
	CMCSA	COMCAST COR	▲	42.38	42.63	42.17	42.24	4763969	
	COF	CAP ONE FINAN	▲	117.71	118.31	116.25	116.33	1356350	

Page 1 of 3

# Power Console Update



Improved visuals for readability

New Arrows designating the expansion or contraction of lists.

Search functionality is brought to focus

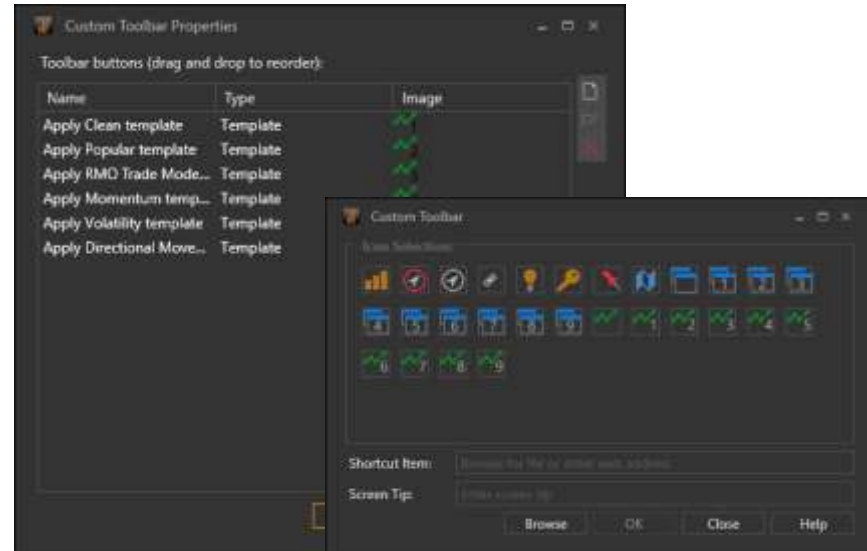
The cursor will now default to Open Instrument Box

Will use the theme of the container

Typing to Apply Template will navigate alphabetically.

# Custom Toolbar

Easier to follow interface for adding to custom toolbar  
New and Improved Icons for the Custom Toolbar  
6 New Icons for Toolbar use





# View Open Window

New view open windows dialog box with a preview

CTRL + TAB has a new Preview Dialog.

Easy navigation to any open chart



# Other Improved Features



## Most Recently Used

- File | Recent File - Shows recent charts and layouts
- Down Arrow on File Menu - Shows recent charts and layouts
- Down arrow on Tabbed Charts shows all open tabbed charts
- Down arrow in main container shows open and recent layouts

## Custom List Editor

- Improved to allow easier pasting into the Custom List Dialogue
- Easy to read icons for easier navigation

## Public List Editor

- Easy to read icons for easier navigation

## 2 New Chart Themes

- Themes to match application colors

# Volume by Price



# Volume by Price



Used to see buying and selling interest at certain prices.

Shows Volume at Specific Price Levels

Show Negative and Positive Volume at that Price Levels

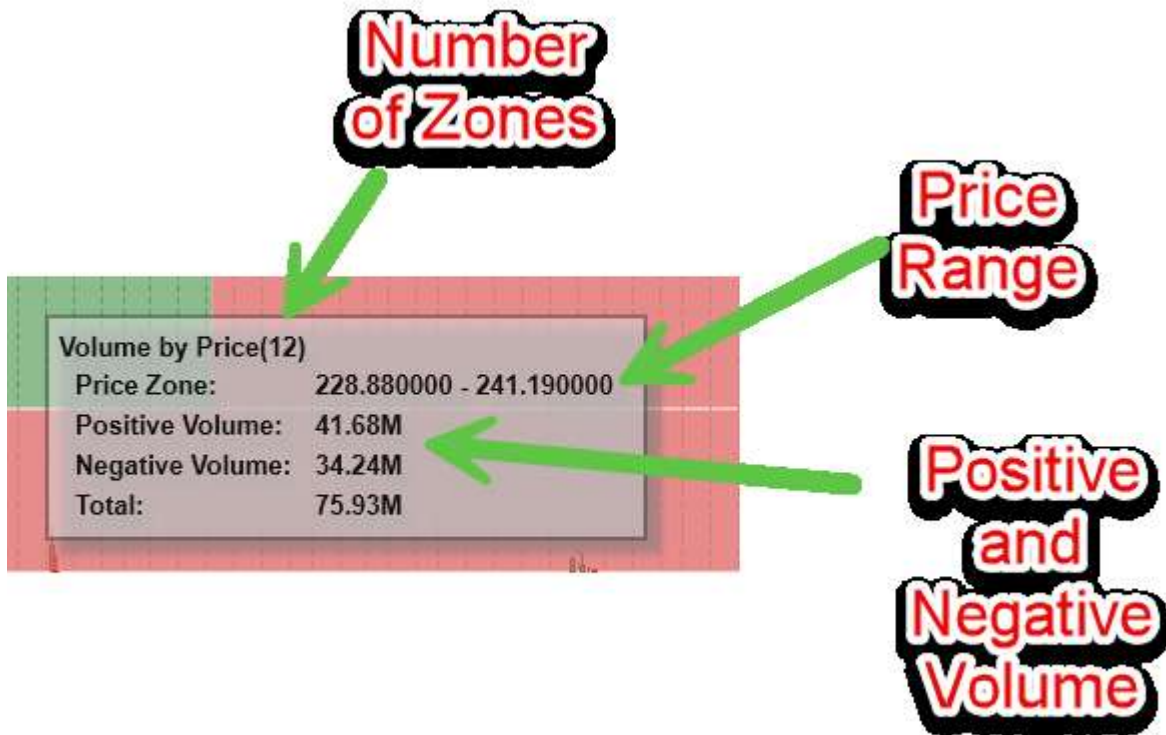
Positive and Negative Volume is calculated based on the close to close of the chart.

# Volume by Price



# Volume by Price

---



# Volume by Price



# Volume by Price



Use with other indicators as a confirmation

Use as a target for pricing based on zone levels (return to mean)

Use as a stand alone to see where the most volume is

Add more/less zone levels based on your preference

Use specific look back periods



# Range Bars/Candles

TESLA INC (Trade Price) (ATR (14), Rg Br) (176.540000, 178.650000, 175.340000, 177.980100, -2.029129)



# Range Bars/Candles



Every Range Bar in a chart is the same height. The distance (range) between the High and Low is the same for every bar. Units of time, like hours, days, or weeks, do not matter.

A slow market could take several days to complete a single Range Bar, while a fast one could draw several bars in a single day's trading. These bars can be calculated on ATR or Points.

Range Bars only use the Close of the underlying data. The Range Bars will expand up or down with the price action. When the height equals the specified range, the current bar will close at the High or Low, depending on the direction of the move. A new Range Bar opens with the value of the underlying Close that triggered the change.

# Range Bars/Candles



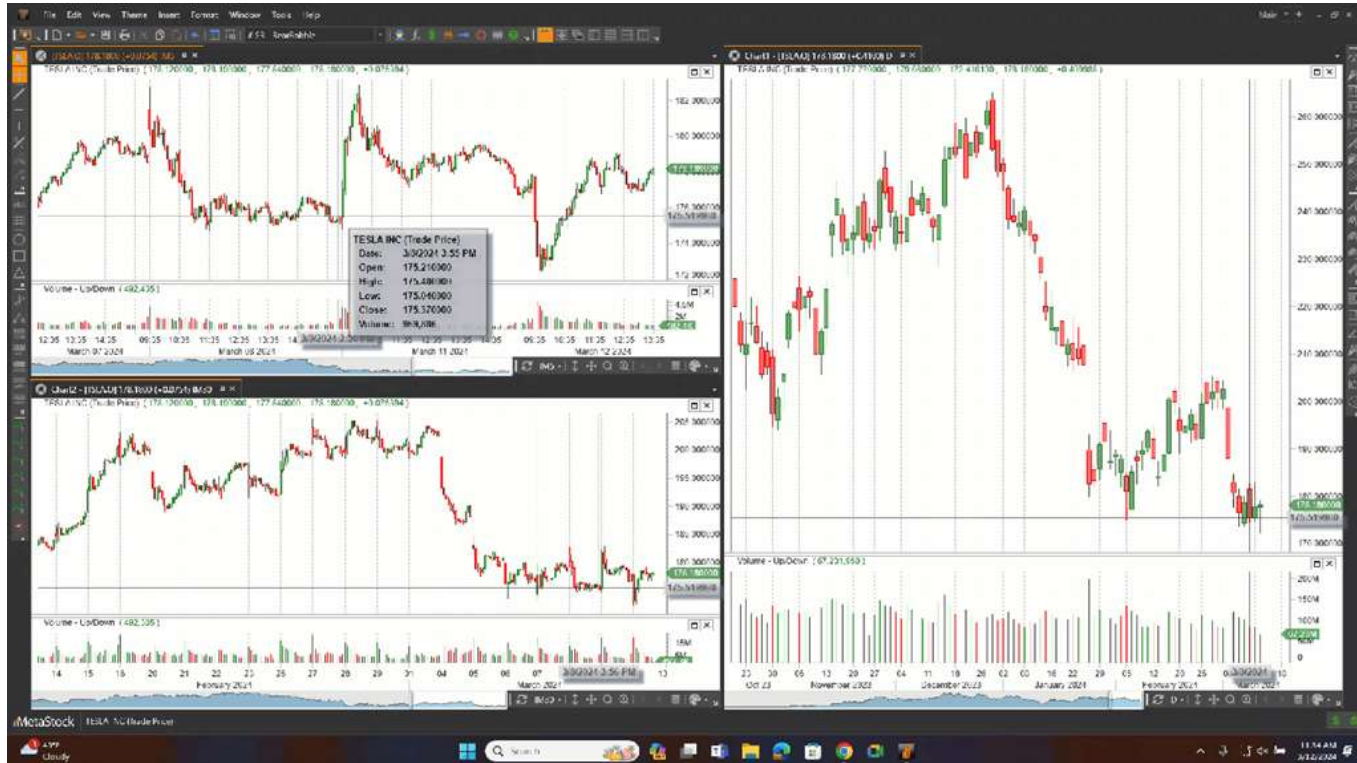
# Global Cursor



Global Synchronized Cursor across all open charts

- Across Multiple Time Frames
- Across all open charts
- Across all open layouts
- Ability to toggle on/off

# Global Cursor



# Watermark

See the Name and Symbol of the Security on the chart



# Other Chart Features



## Other Chart Features

- Learn as you plot. Move the chart back and forth one plot at a time with CTRL+Arrow
  - Move backward or forwards
- Greater precision on the ODDS probability cone.
- Transparency will remain set when toggling between colors
- Mirror Y-Axis for improved Axis Visibility (Plot on Both Left and Right Axis)
- Ability to change font and font size on X and Y axis

## Text Editor

- Improved Text Editor Dialog box for easier reviewing/editing of chart text

# New Drawing Tools



- Measure Tool for Percent Change
  - Measure between two data points for percent change between data points.
  - Ability to customize Color/Style/Fonts
  - The ability to add the number of periods to display
- Measure Tool for Points Change
  - Measure between two data points for points change between data points
  - Ability to customize Color/Style/Fonts
  - The Ability to add the number of periods to display



# New Drawing Tools

---

## Measure Tool for Percent Change

- Measure between two data points for percent change between data points.
- Ability to customize Color/Style/Fonts
- The ability to add the number of periods to display

## Measure Tool for Points Change

- Measure between two data points for points change between data points
- Ability to customize Color/Style/Fonts
- The Ability to add the number of periods to display



# New Drawing Tools

XABCD

Head and Shoulders

Elliott Wave 12456

Elliott Wave ABCDE

Elliott Wave ABC

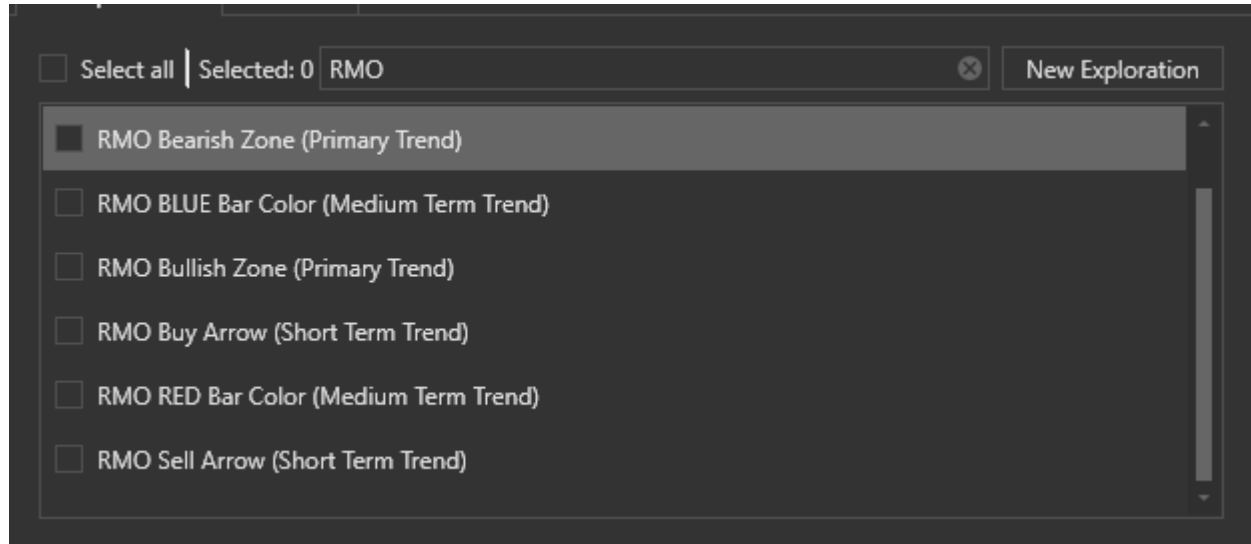
Elliott Wave 123

Elliott Wave WxYxZ



# Updated RMO Explorations

- Improved Naming of Explorations (Now all Grouped)
- Improved Exploration Column Names for easier understanding.
- Added Exploration Tool Tips for RMO Explorations



# 5 New RMO Templates



RMO Binary Bull Pulse

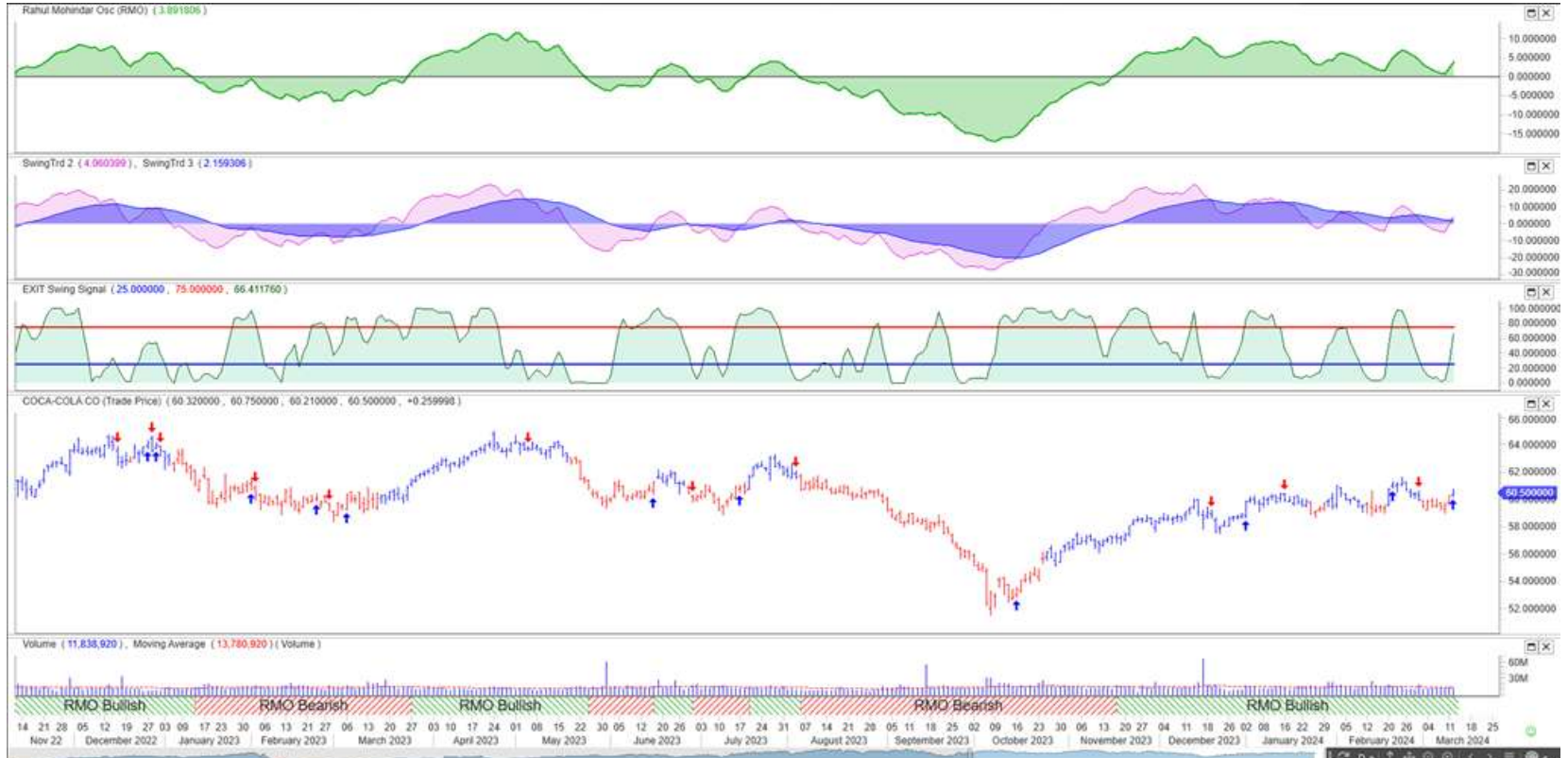
RMO Binary Bear Pulse

RMO Binary Bull & Bear Pulse

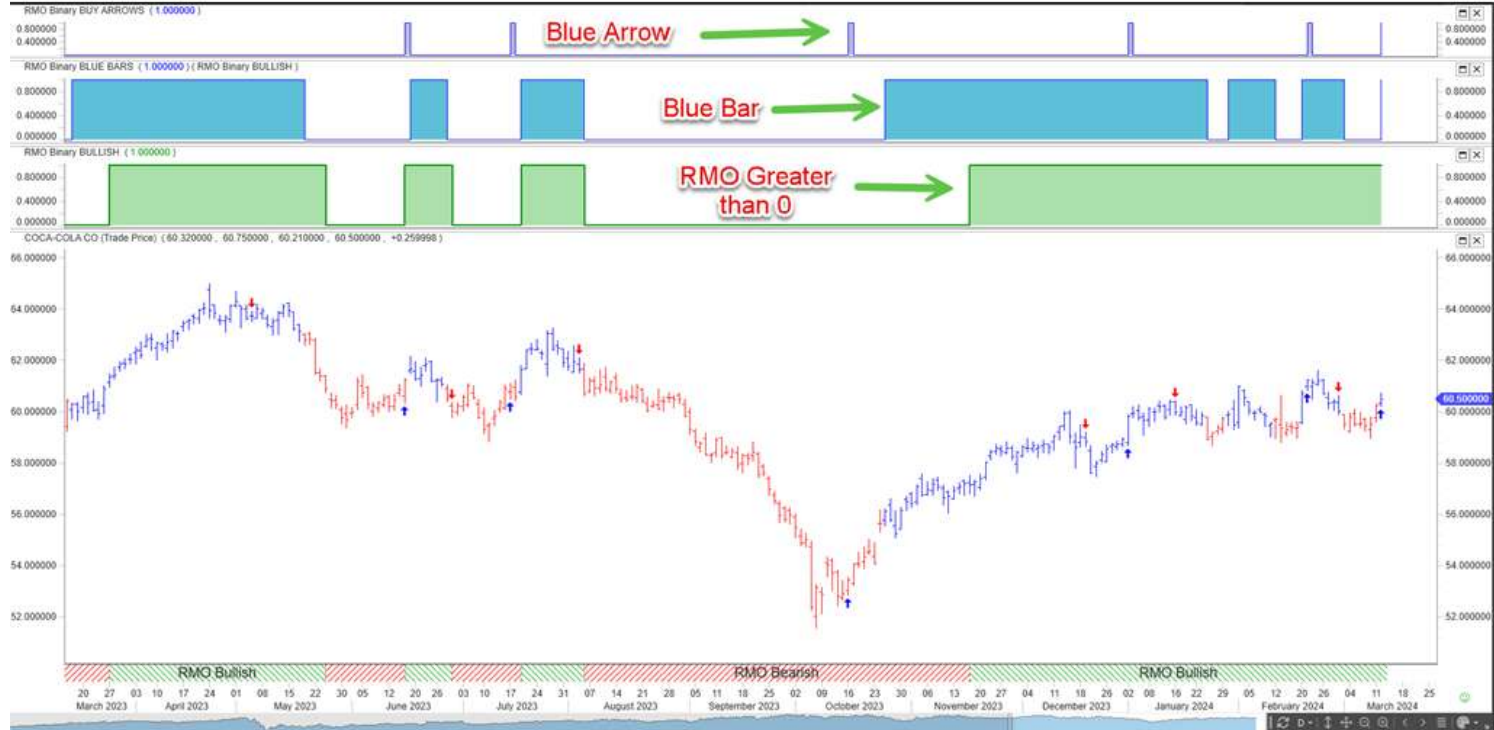
RMO Pro Mode

RMO Model Shaded

# RMO Model Shaded



# RMO Bull Pulse



# RMO Bear Pulse



# RMO Bull & Bear Pulse





# RMO Pro Mode



# Gap Identification

**Gap Identifier**  
Review of ALGN TECH INC (Trade Price)  
(ALGN.O)  
as of 10/11/2023

Gap Checklist for Identified bar:

- Gap Up: **NO**
- Gap Down: **NO**
- Gap Up with Volume: **NO**
- Gap Down with Volume: **NO**

A gap refers to a significant difference or discontinuity in the price or trading range of a stock or other financial instrument between two consecutive trading sessions. It represents a break or "gap" in the price chart, where the opening price of the subsequent trading session is significantly different from the closing price of the previous session.

A gap can occur in both upward and downward directions:

1. Upward gap: This happens when the opening price of a stock is higher than the previous session's closing price, creating an upward jump in the price chart. It indicates increased demand and bullish sentiment among traders.
2. Downward gap: This occurs when the opening price of a stock is lower than the previous session's closing price, resulting in a downward plunge in the price chart. It indicates increased selling pressure and bearish sentiment among traders.

Gaps can arise due to various factors, including significant news announcements, earnings reports, economic data releases, or other events

Instrument Name	GAP UP	GAP DOWN	GAP UP V
MARTIN PETRO	1.0000	0.0000	0.0000
HESS CORP	1.0000	0.0000	0.0000
NEXTERA ENERGY	1.0000	0.0000	0.0000
STEEL DYNAMICS	1.0000	0.0000	0.0000
LULULEMON ATHL...	1.0000	0.0000	0.0000
RYL CRBN GRP ORD	1.0000	0.0000	0.0000
ULTA BEAUTY INC	1.0000	0.0000	0.0000
VALERO ENERGY	1.0000	0.0000	0.0000
EOG RESOURCES	1.0000	0.0000	0.0000
CONOCOPHILLIPS	1.0000	0.0000	0.0000
CARNIVAL CORP	1.0000	0.0000	0.0000
EVERGY INC ORD	1.0000	0.0000	0.0000
CHEVRON	1.0000	0.0000	0.0000
PHILLIPS 66	1.0000	0.0000	0.0000
DEVON ENERGY	1.0000	0.0000	0.0000
COCA-COLA CO	1.0000	0.0000	0.0000
DOVER CORP	1.0000	0.0000	0.0000
MARATHON OIL	1.0000	0.0000	0.0000
APA CORP/PTN O...	1.0000	0.0000	0.0000
FREEPORT/MCMOR...	1.0000	0.0000	1.0000

# JBXC - Expansion and Contraction



# ETS 2.1 - Included Add on



## **Main Indicators**

ETS Moving Average

ETS TrendWatch

## **Explorations**

Long/Short Entries

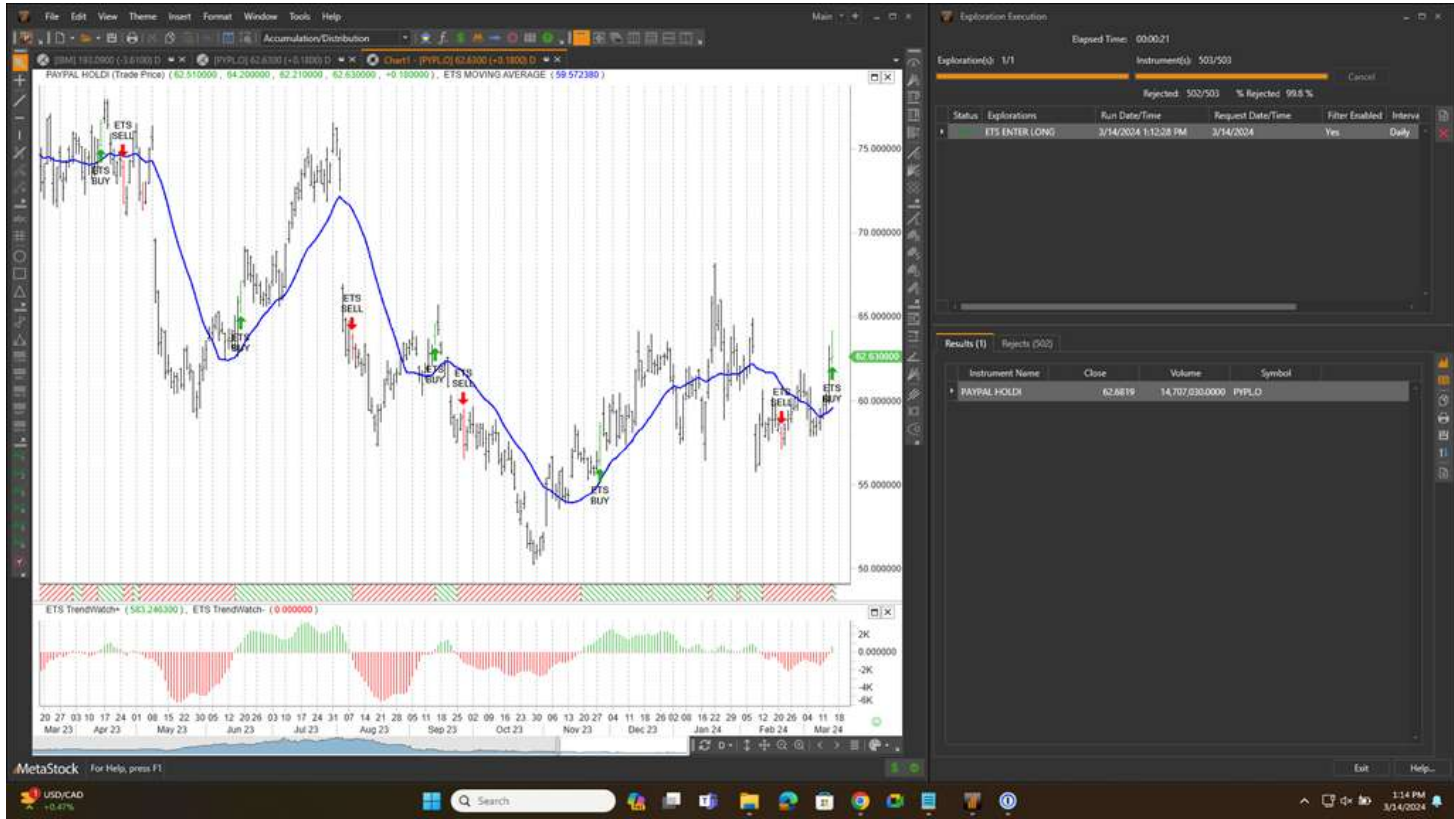
## **System Tests**

ETS Trading System System Tests

## **Experts:**

ETS Trading System Expert

# ETS 2.1



# ETS 2.1 - TrendWatch



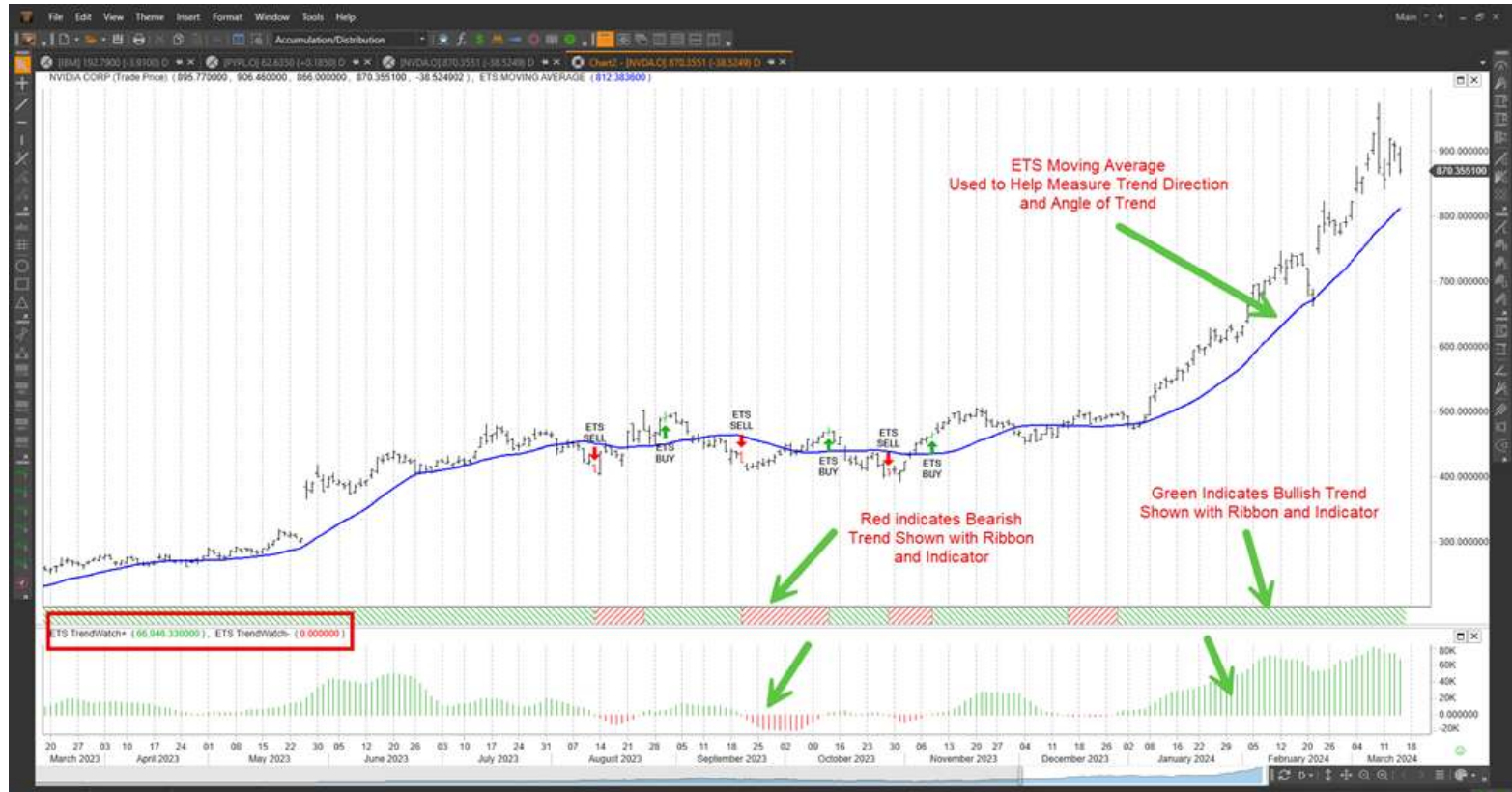
TrendWatch™ appears green when the market is rising and red when declining. It measures the true trend, as defined by certain slopes and angles, and is an integral part of the ETS trading system. Slopes and angles are the essence of successfully technically trading the markets. When TrendWatch™ changes color, you will see slopes of moving averages begin to angle upwards or downwards, as illustrated above. TrendWatch™ is the result of years of research. It has demonstrated historical accuracy on all markets and time frames.

**The trend is your friend - as long as you know what it is!**

# ETS 2.1 - TrendWatch



# ETS 2.1 - Moving Average

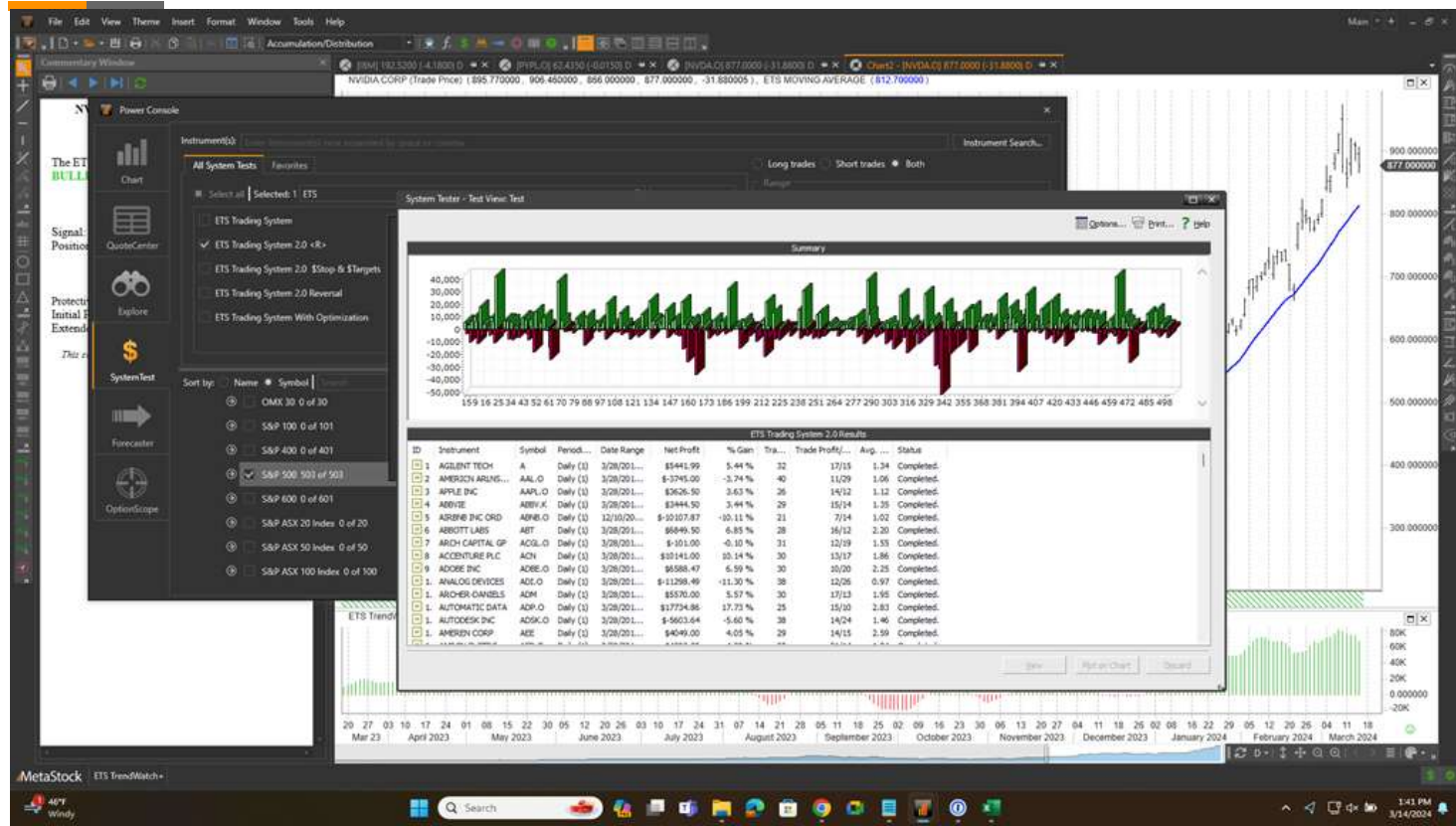




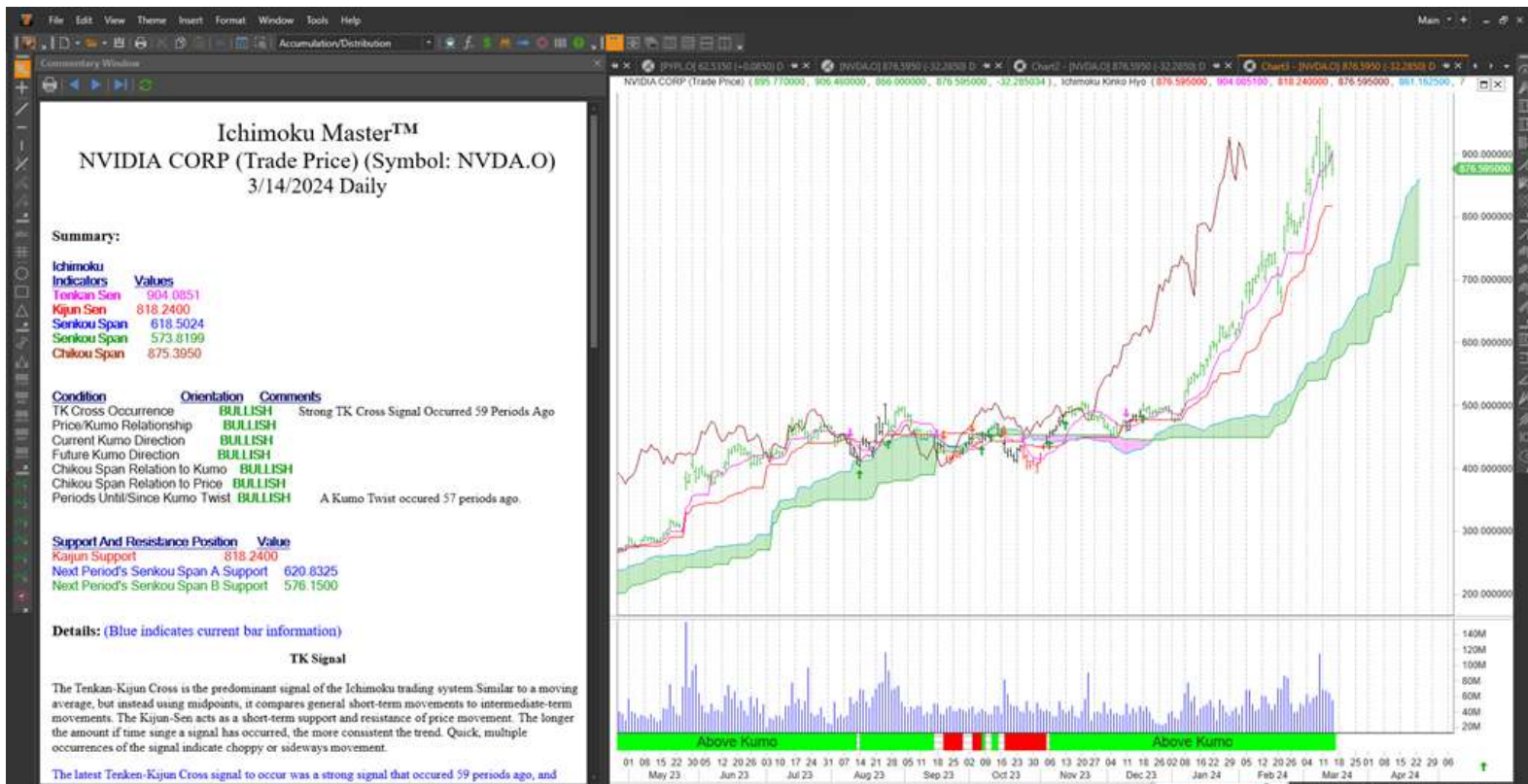
# ETS 2.1 - Signals, Targets, Stops!



# ETS 2.1 - System Tests Included



# Ichimoku Master - Included System!



# Ichimoku Sanjin (What a Man in the Mountain Sees)

---



# Ichimoku



Tenkan-Sen

Kijun-Sen

Senkou Span A (Kumo)

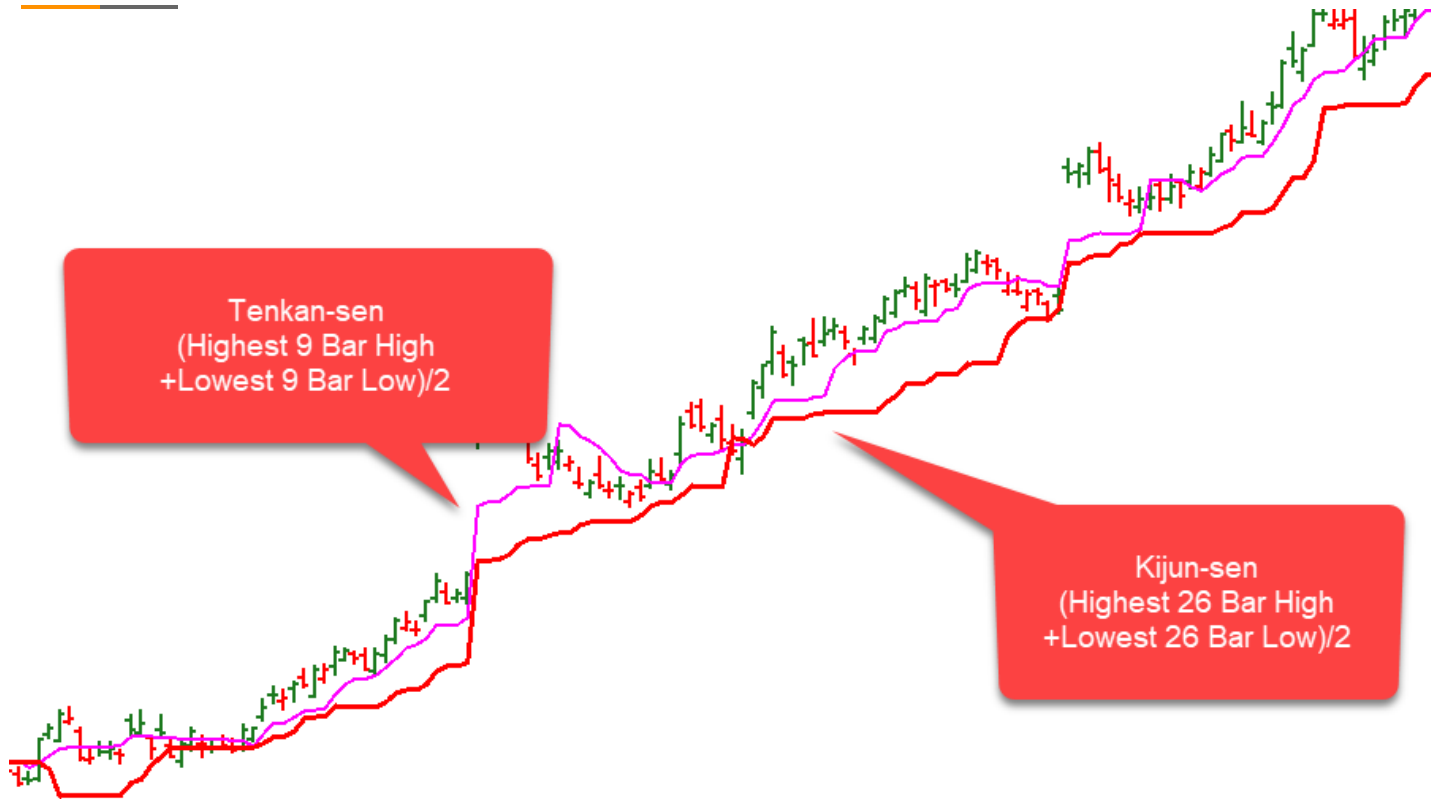
Senkou Span B (Kumo)

Chikou Span

Close

# Ichimoku

---



# Interpretation

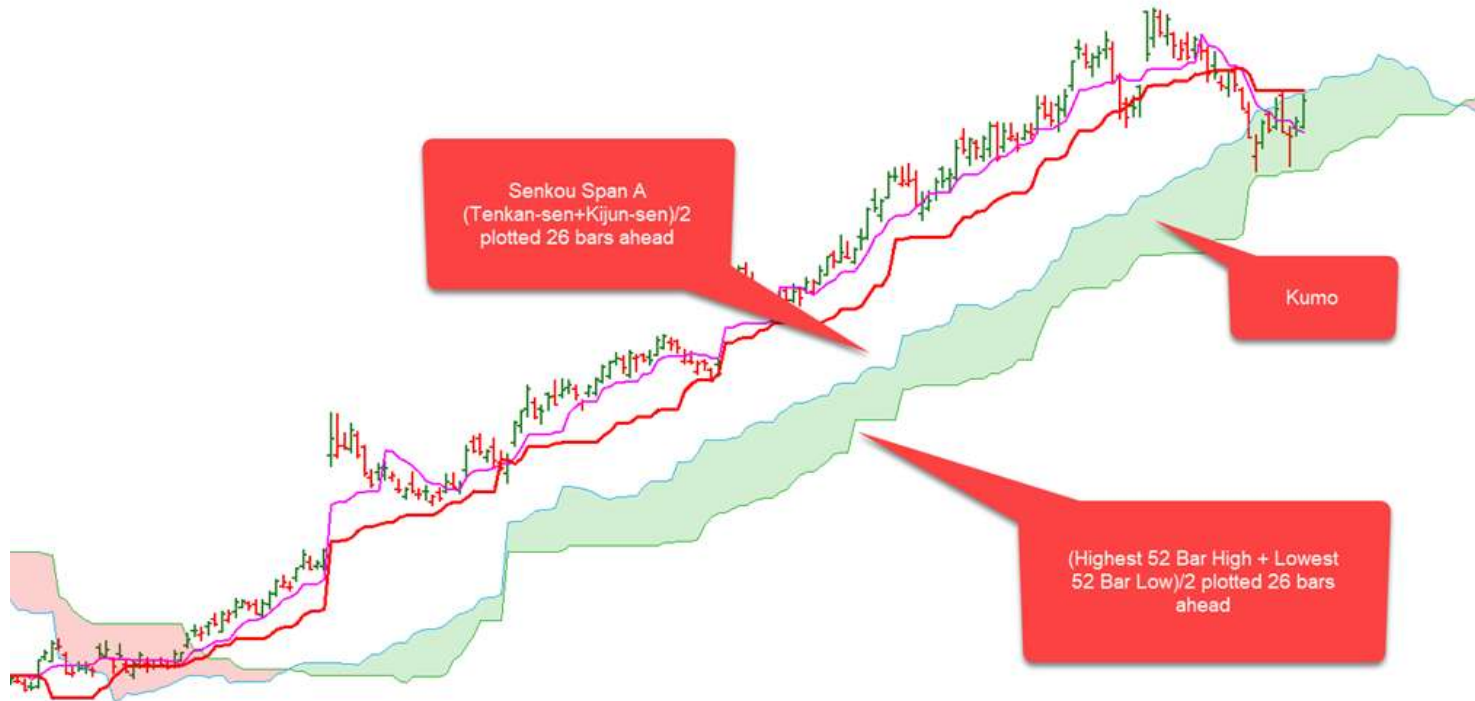


Tenkan-sen above Kijun-sen = Bullish

Tenkan-sen below Kijun-sen = Bearish

Crosses indicate an opportunity to buy or sell

# Interpretation





# Interpretation



Trend Bias

Price Relationship to Kumo

Kumo acts as support/resistance

Kumo Direction (current)

Kumo Direction (future)

Kumo Twist - Senkou Span A in relation to Senkou Span B

# Interpretation



# Interpretation



Relationship to Kumo (Cloud)

Relationship to Price

# Conditions

---

Tenkan-sen / Kijun-sen relationship

Price / Kumo Relationship

Current Kumo Direction

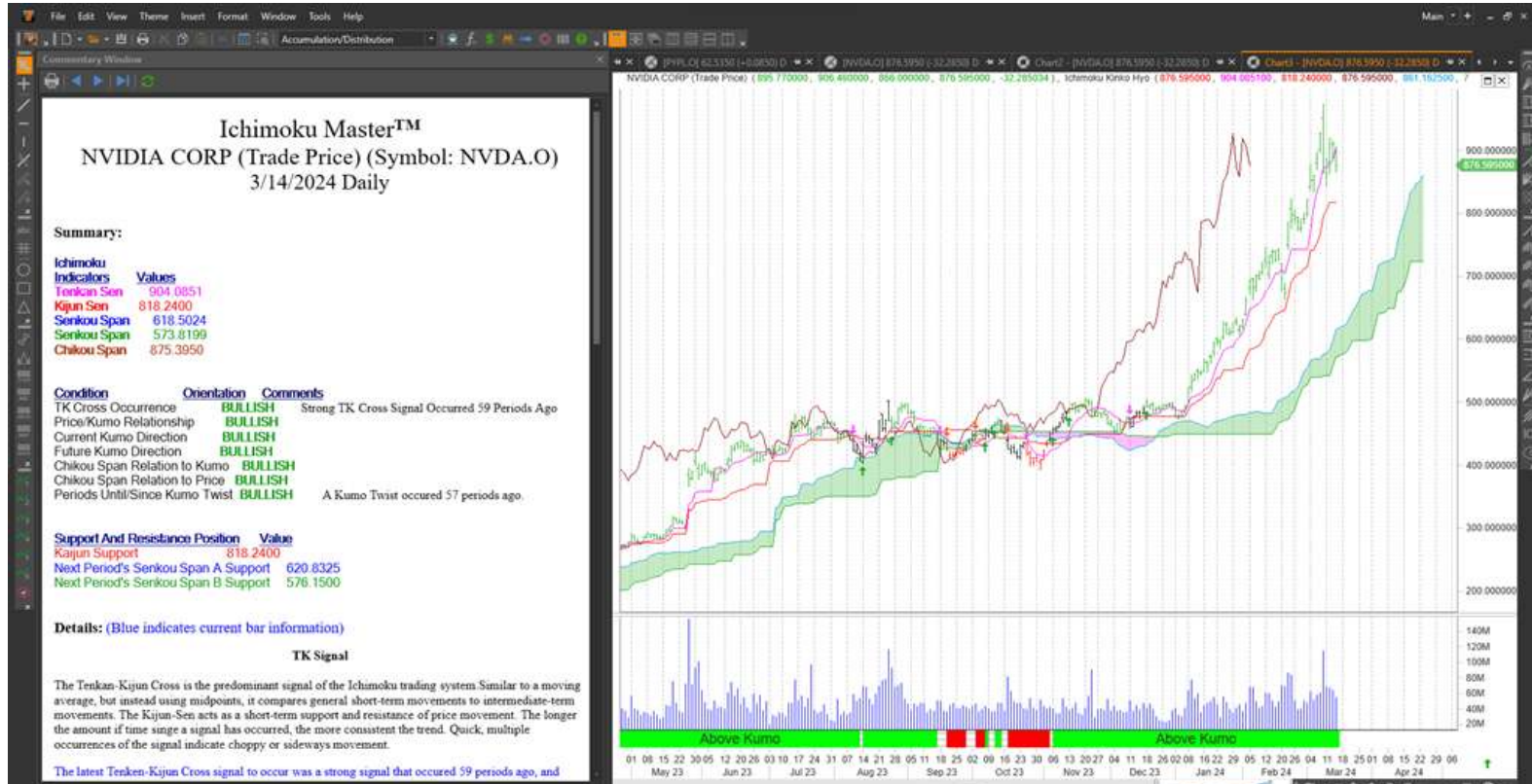
Future Kumo Direction

Chikou Span Relationship to Kumo

Chikou Span Relationship to Price

Kumo Twist

# Use Expert to Tie all Together



# Included with MetaStock 19

---

## Expert Advisors:

- Ichimoku (Complete)
- Ichimoku (Description Free)
- Ichimoku (Minimal)

## Indicators

- Ichimoku Chikou Span
- Ichimoku Kijun Sen
- Ichimoku Senkou Span A (Unshifted)
- Ichimoku Senkou Span A
- Ichimoku Senkou Span B (Unshifted)
- Ichimoku Senkou Span B
- Ichimoku Tenkan Sen

## Exploration

- Ichimoku – Signals

## System Tests

- Ichimoku Current Cloud
- Ichimoku Future Cloud
- Ichimoku with Loose Stops
- Ichimoku with Medium and Loose Stops
- Ichimoku with Tight Stops

# JBXC - Free Template



# JBXC - MAC Channel





# JBXC - Williams



# JBXC - Expansion Contraction



# JBXC - Expansion Contraction

---

Expansion Contraction compares two price points (the high and the low), up or down, through the two moving average channel (MAC) settings. Since Expansion Contraction measures every period (chart setting), it's technically considered "concurrent" (not a lagging indicator). A second indicator compares two price points (the high and the low), up or down, through two longer look-back moving average channel settings. Ideally, this ratio usually produces a condition where a two standard deviation short-term move (strong swing) equals approximately a one standard deviation long-term move (trend strengthening).

# JBXC - Expansion/Contraction Areas



# MetaStock 19 - What we've Covered

---

New and Improved Charting Workflows

New and Improved Layout Workflows

New Theme Support

New Container for Modern Look/Feel

New Charting Styles

New Drawing Tools

New Trading Systems



# Unleash the Power of MetaStock

---

Starting with MetaStock

MetaStock Power Tools Overview

Filter and Backtesting

More on Backtesting

Using the Forecaster

Filtering and Forecasting

Chart Patterns and Forecasting

Understanding the RMO

Working with Local Data



# Contact Us



**Green Byte Srls**

**Via Maiolo 68 – 00132 Roma (Italia)**

**Mob.: +39 348 7039210**

**Tel. Uff. : +39 06 2203632**

**Web: [www.greenbyte.it](http://www.greenbyte.it)**

**Web: [www.metastock.eu](http://www.metastock.eu)**

**Email: [sales@greenbyte.it](mailto:sales@greenbyte.it)**

**Skype: pezzano-greenbyte**